

Shop Sales

A clothes shop has 4 price groups: Bargain, Value, Everyday & Luxury.

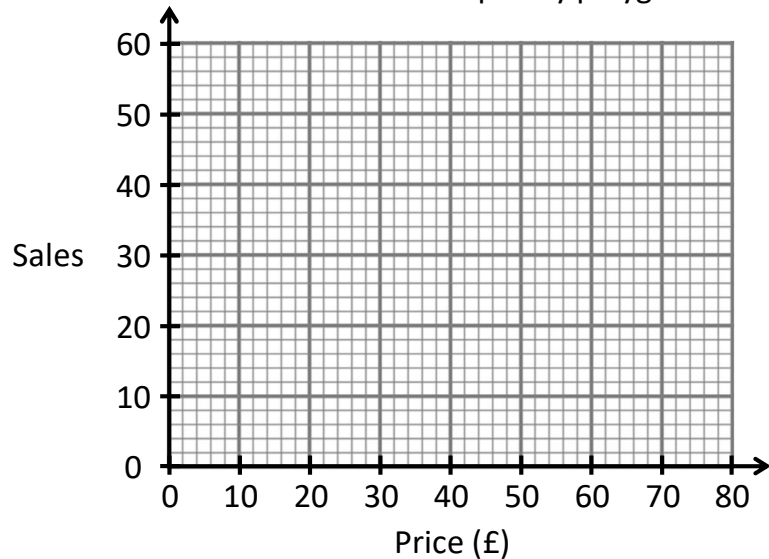
Which of the groups earned the shop the most amount of money on Monday?
(multiply sales by the mid-group value to find the total group value)

Monday

	Price p , (£)	Sales	Mid-Group Value (£)	Total Group Value
Bargain	$0 < p \leq 20$	46		
Value	$20 < p \leq 40$	28		
Everyday	$40 < p \leq 60$	32		
Luxury	$60 < p \leq 80$	14		
	Totals			

Calculate the total income & the mean price of the items sold.

Plot the data as a frequency polygon.



Plot the data for Friday on the same grid. Calculate a mean price.

Friday

	Price p , (£)	Sales	Mid-Group Value (£)	Total Group Value
Bargain	$0 < p \leq 20$	26		
Value	$20 < p \leq 40$	36		
Everyday	$40 < p \leq 60$	40		
Luxury	$60 < p \leq 80$	56		

What comments can you make comparing the sales on Monday & Friday?

Shop Sales

A clothes shop has 4 price groups: Bargain, Value, Everyday & Luxury.

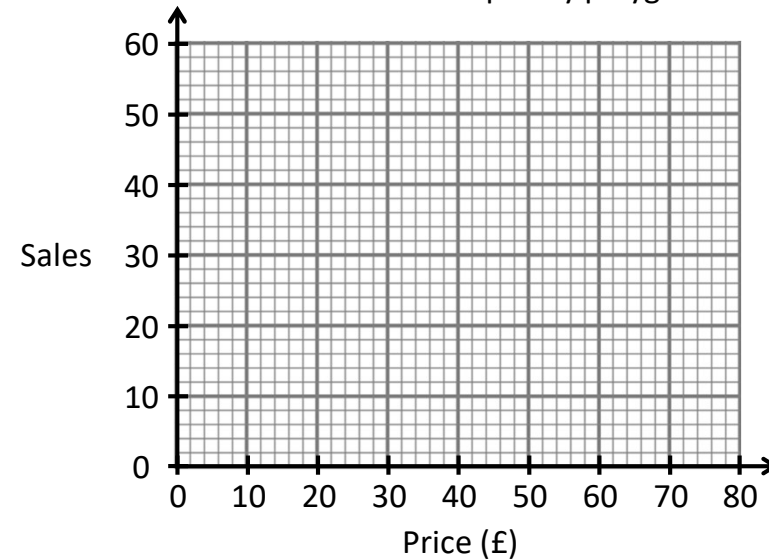
Which of the groups earned the shop the most amount of money on Monday?
(multiply sales by the mid-group value to find the total group value)

Monday

	Price p , (£)	Sales	Mid-Group Value (£)	Total Group Value
Bargain	$0 < p \leq 20$	46		
Value	$20 < p \leq 40$	28		
Everyday	$40 < p \leq 60$	32		
Luxury	$60 < p \leq 80$	14		
	Totals			

Calculate the total income & the mean price of the items sold.

Plot the data as a frequency polygon.



Plot the data for Friday on the same grid. Calculate a mean price.

Friday

	Price p , (£)	Sales	Mid-Group Value (£)	Total Group Value
Bargain	$0 < p \leq 20$	26		
Value	$20 < p \leq 40$	36		
Everyday	$40 < p \leq 60$	40		
Luxury	$60 < p \leq 80$	56		

What comments can you make comparing the sales on Monday & Friday?

Shop Sales

A clothes shop has 4 price groups: Bargain, Value, Everyday & Luxury.

Which of the groups earned the shop the most amount of money on Monday?

(multiply sales by the mid-group

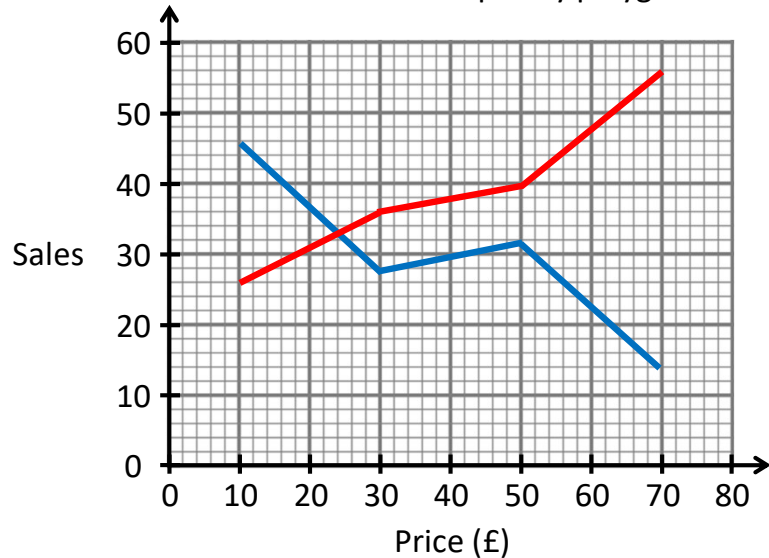
$$\text{Mean} = \text{£}3880 \div 120 = \text{£}32.33$$

Monday

	Price p , (£)	Sales	Mid-Group Value (£)	Total Group Value
Bargain	$0 < p \leq 20$	46	10	460
Value	$20 < p \leq 40$	28	30	840
Everyday	$40 < p \leq 60$	32	50	1600
Luxury	$60 < p \leq 80$	14	70	980
Totals		120		3880

Calculate the total income & the mean price of the items sold.

Plot the data as a frequency polygon.



Plot the data for Friday on the same grid. Calculate a mean price.

Friday

$$\text{Mean} = \text{£}7260 \div 158 = \text{£}45.95$$

	Price p , (£)	Sales	Mid-Group Value (£)	Total Group Value
Bargain	$0 < p \leq 20$	26	10	260
Value	$20 < p \leq 40$	36	30	1080
Everyday	$40 < p \leq 60$	40	50	2000
Luxury	$60 < p \leq 80$	56	70	3920
Totals		158		7260

What comments can you make comparing the sales on Monday & Friday?

