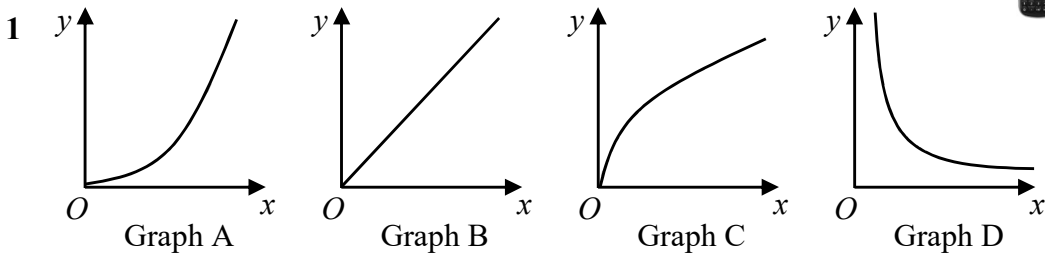


GCSE — Edexcel Higher: June 2018 Paper 2, Q12

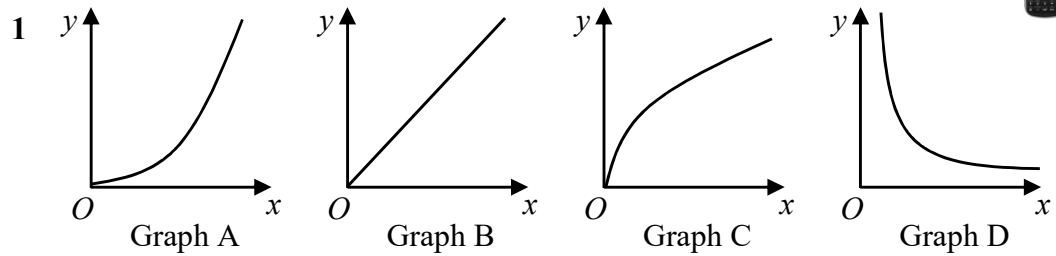


The graphs of y against x represent four different types of proportionality. Match each type of proportionality in the table to the current graph.

Type of proportionality	Graph letter
$y \propto x$	
$y \propto x^2$	
$y \propto \sqrt{x}$	
$y \propto \frac{1}{x}$	

(Total for Question 1 is 2 marks)

GCSE — Edexcel Higher: June 2018 Paper 2, Q12

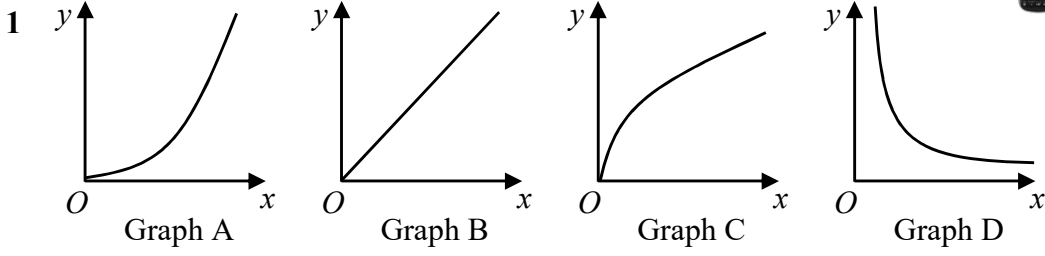


The graphs of y against x represent four different types of proportionality. Match each type of proportionality in the table to the current graph.

Type of proportionality	Graph letter
$y \propto x$	
$y \propto x^2$	
$y \propto \sqrt{x}$	
$y \propto \frac{1}{x}$	

(Total for Question 1 is 2 marks)

GCSE — Edexcel Higher: June 2018 Paper 2, Q12

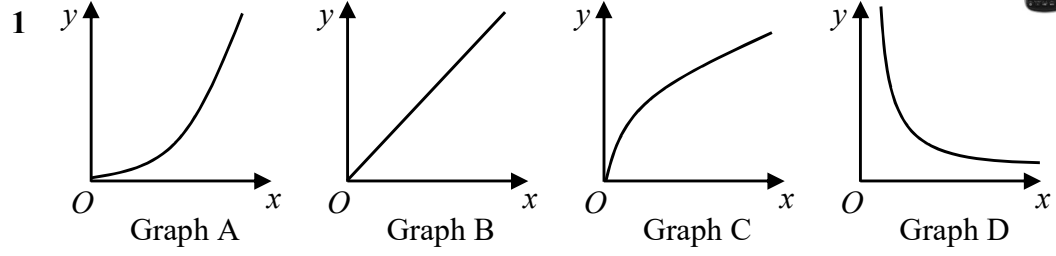


The graphs of y against x represent four different types of proportionality. Match each type of proportionality in the table to the current graph.

Type of proportionality	Graph letter
$y \propto x$	
$y \propto x^2$	
$y \propto \sqrt{x}$	
$y \propto \frac{1}{x}$	

(Total for Question 1 is 2 marks)

GCSE — Edexcel Higher: June 2018 Paper 2, Q12

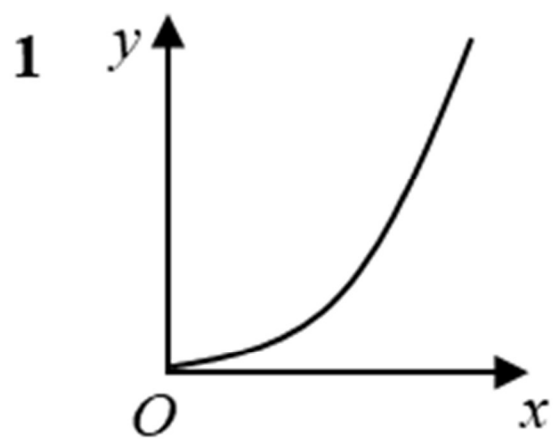


The graphs of y against x represent four different types of proportionality. Match each type of proportionality in the table to the current graph.

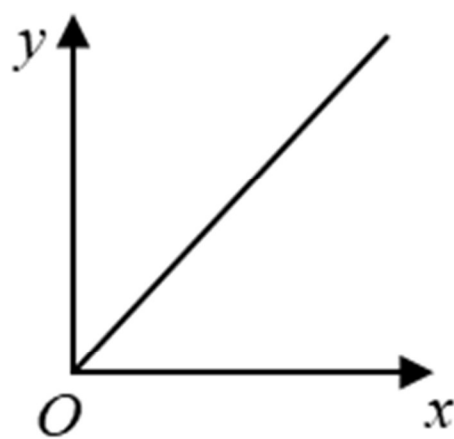
Type of proportionality	Graph letter
$y \propto x$	
$y \propto x^2$	
$y \propto \sqrt{x}$	
$y \propto \frac{1}{x}$	

(Total for Question 1 is 2 marks)

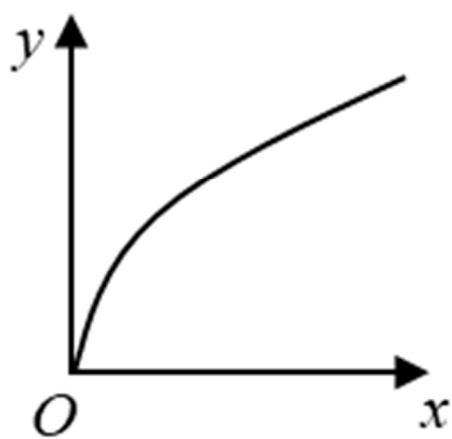
GCSE — Edexcel Higher: June 2018 Paper 2, Q12



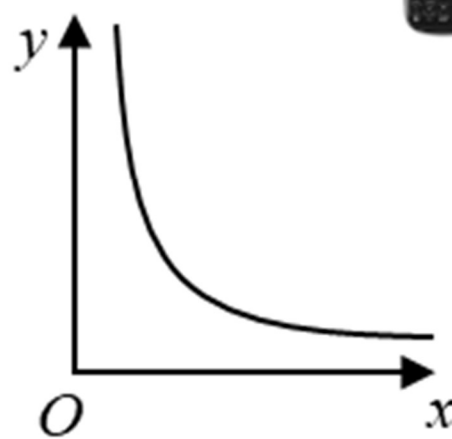
Graph A



Graph B



Graph C



Graph D

The graphs of y against x represent four different types of proportionality. Match each type of proportionality in the table to the current graph.

Type of proportionality	Graph letter
$y \propto x$	B
$y \propto x^2$	A
$y \propto \sqrt{x}$	C
$y \propto \frac{1}{x}$	D

(Total for Question 1 is 2 marks)